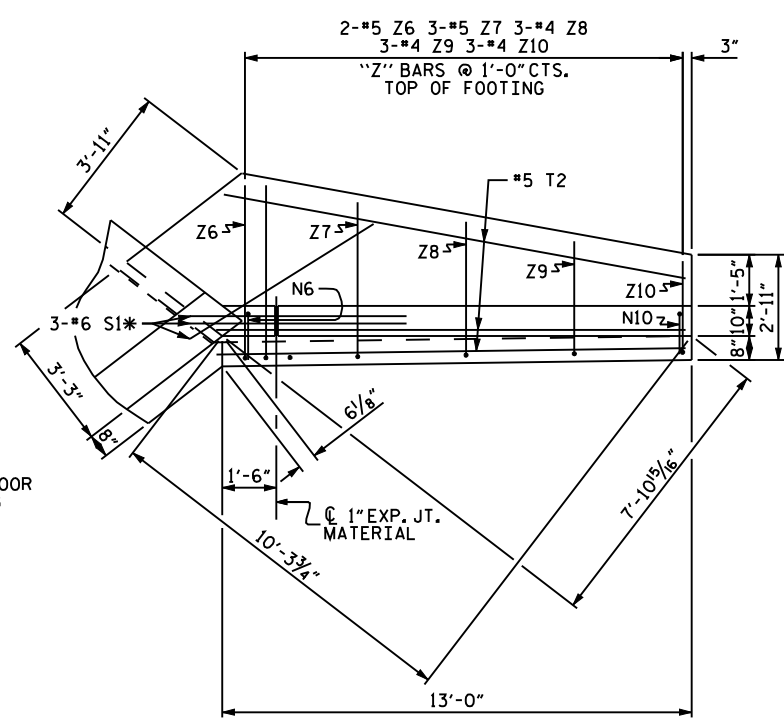
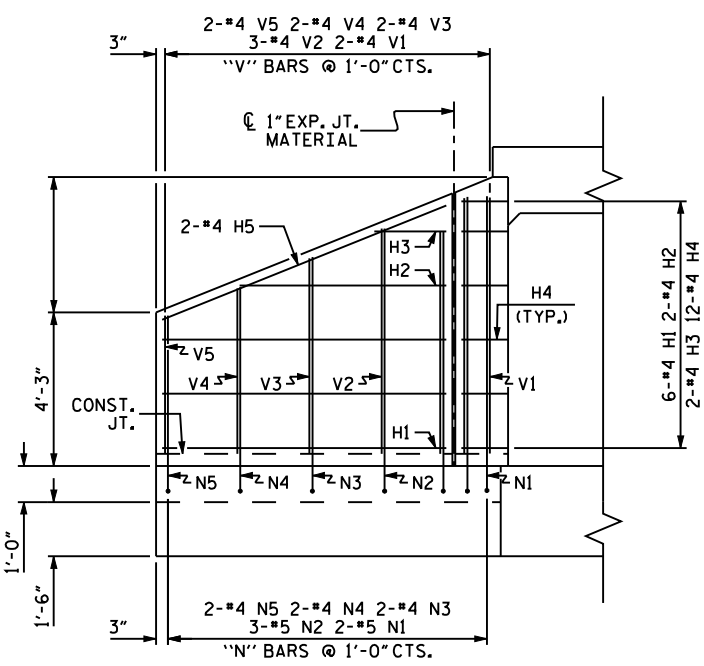


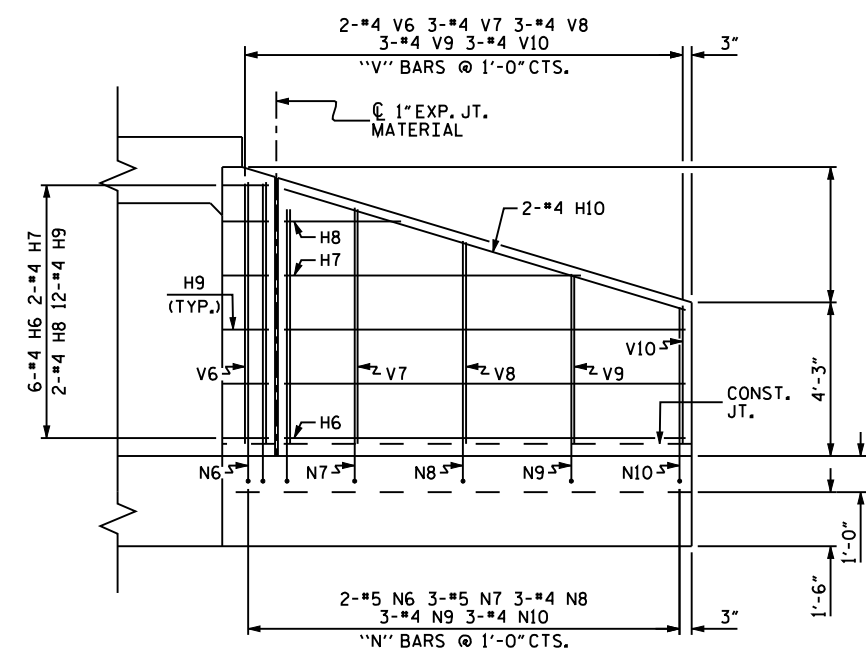
PLAN W2



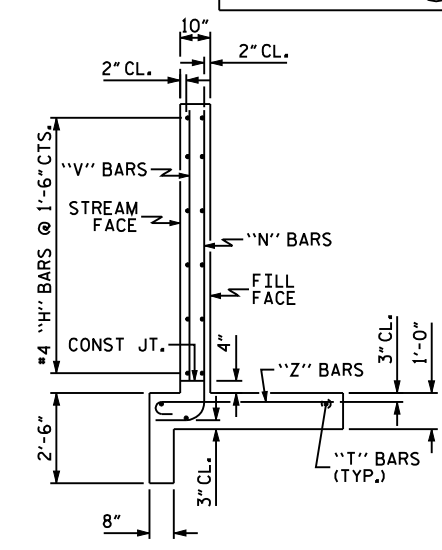
PLAN W1



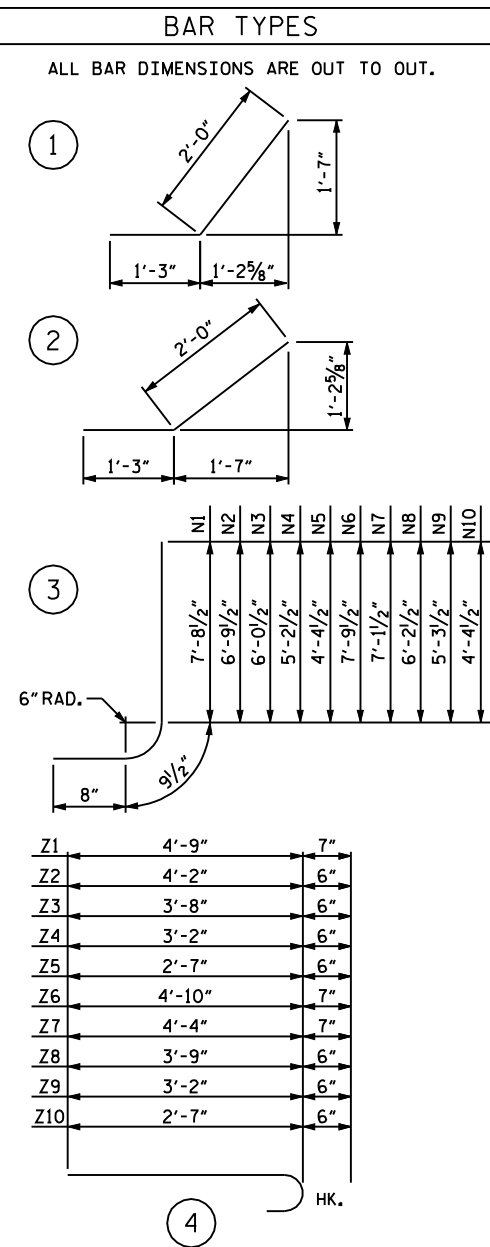
ELEVATION W2



ELEVATION W1



TYPICAL WING SECTION



Z1	4'-9"	7"
Z2	4'-2"	6"
Z3	3'-8"	6"
Z4	3'-2"	6"
Z5	2'-7"	6"
Z6	4'-10"	7"
Z7	4'-4"	7"
Z8	3'-9"	6"
Z9	3'-2"	6"
Z10	2'-7"	6"

BILL OF MATERIAL					
BAR NO.	SIZE	TYPE	LENGTH	WEIGHT	
H1	12	#4	STR	7'-10"	63
H2	4	#4	STR	5'-8"	15
H3	4	#4	STR	2'-0"	5
H4	24	#4	1	3'-3"	52
H5	4	#4	STR	8'-5"	22
H6	12	#4	STR	11'-1"	89
H7	4	#4	STR	8'-2"	22
H8	4	#4	STR	3'-3"	9
H9	24	#4	2	3'-3"	52
H10	4	#4	STR	11'-7"	31
N1	4	#5	3	9'-2"	38
N2	6	#5	3	8'-3"	52
N3	4	#4	3	7'-6"	20
N4	4	#4	3	6'-8"	18
N5	4	#4	3	5'-10"	16
N6	4	#5	3	9'-3"	39
N7	6	#5	3	8'-7"	54
N8	6	#4	3	7'-8"	31
N9	6	#4	3	6'-9"	27
N10	6	#4	3	5'-10"	23
S1	12	#6	STR	6'-0"	108
T1	6	#5	STR	9'-9"	61
T2	6	#5	STR	13'-0"	81
V1	4	#4	STR	7'-1"	19
V2	6	#4	STR	6'-3"	25
V3	4	#4	STR	5'-5"	14
V4	4	#4	STR	4'-7"	12
V5	4	#4	STR	3'-10"	10
V6	4	#4	STR	7'-3"	19
V7	6	#4	STR	6'-6"	26
V8	6	#4	STR	5'-7"	22
V9	6	#4	STR	4'-8"	19
V10	6	#4	STR	3'-10"	15
Z1	4	#5	4	5'-4"	22
Z2	6	#4	4	4'-8"	19
Z3	4	#4	4	4'-2"	11
Z4	4	#4	4	3'-8"	10
Z5	4	#4	4	3'-1"	8
Z6	4	#5	4	5'-5"	23
Z7	6	#5	4	4'-11"	31
Z8	6	#4	4	4'-3"	17
Z9	6	#4	4	3'-8"	15
Z10	6	#4	4	3'-1"	12
REINFORCING STEEL FOR 4 WINGS				1277	LBS
CLASS A CONCRETE					
4 WINGS				18.2	CY
2 HEADWALLS					CY
2 END CURTAIN WALLS					CY
TOTAL					CY

PROJECT NO. \_\_\_\_\_  
 \_\_\_\_\_ COUNTY  
 STATION: \_\_\_\_\_

STATE OF NORTH CAROLINA  
 DEPARTMENT OF TRANSPORTATION  
 RALEIGH  
**STANDARD WINGS FOR CONCRETE BOX CULVERT**  
 H = 7'-0" SLOPE = 2:1  
 75° OR 105° SKEW

ASSEMBLED BY : \_\_\_\_\_ DATE : \_\_\_\_\_  
 CHECKED BY : CCJ 12/99 DATE : \_\_\_\_\_  
 CHECKED BY : RWW 03/00

REVISIONS					SHEET NO.
NO.	BY:	DATE:	NO.	BY:	DATE:
1			3		
2			4		